

# ~ En Passant ~

*Newsletter of the North Penn Chess Club of Lansdale, Spring 2012, Part 2*

North Penn Chess Club  
500 West Main Street  
Lansdale, PA 19446  
[www.northpennchessclub.org](http://www.northpennchessclub.org)

(215) 699-8418

[donfunk@msn.com](mailto:donfunk@msn.com)

Olin Mastin, Editor

## A few more games from the North Penn Chess Club 33<sup>rd</sup> Annual Winter Robin

By Olin Mastin

Eric and I decided to add a Part 2 to the Spring Newsletter to include some additional games.

### The following three games are from the 2012 NPCC Winter Robin:

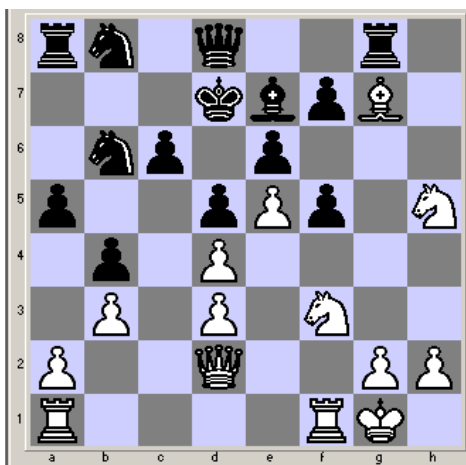
Round 5, February 3, 2012

White: Olin Mastin (1566)

Black: Gary Stevens (1354)

(Submitted by Olin, with his comments.)

1.d4 d5 2.Nc3 e6 3.e4 Nf6 4.e5 Nfd7 5.Bb5 c6  
6.Bd3 Be7 7.f4 g6 8.Nf3 h6 9.O-O b5 10.Be3 b4  
11.Ne2 Nb6 12.b3 a5 13.Qd2 Bb7 14.f5 gxf5  
15.Bxh6 Rg8 16.Ng3 Ba6 17.Nh5 Bxd3 18.cxd3  
Kd7 19.Bg7 [D]

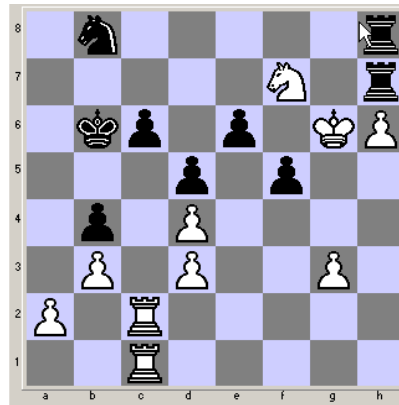


(Computer

suggests 19...Rxc7 20.Nxc7 Qh8! 21.Nxf5  
((where is the knight to go?)) exf5 etc...)  
19... Na6 20.Bf6 (Nf6+ looks good too) Rg6  
21.Bxe7 Qxe7 22.Nf6+ Kc7 23.Rac1 Nb8 24.Qc2  
N6d7 25.Nxd7 Qxd7 26.Qc5 Na6 27.Qxa5+ Kb7  
28.Rc2 Qc7 29.Qxc7+ Kxc7 30.Rfc1 Nb8 31.h3  
Rh6 32.Kf2 Ra7 33.Ke3 Kb6 34.Kf4 f6 35.exf6  
Rxf6 36.Ne5 Rc7 37.h4 Rh6 38.g3 Rhh7

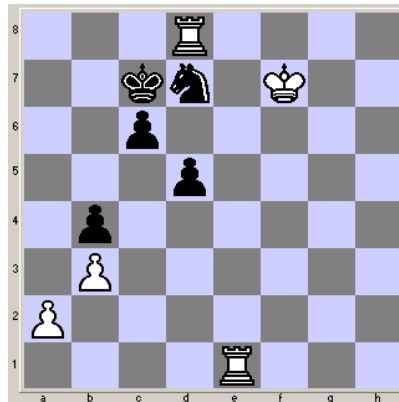
39.Ng6 Rhg7 40.h5 Rcf7

41.Ne5 (Re1 looks formidable here) Rc7 42.h6  
Rh7 43.Kg5 Rc8 44.Kg6 Rch8? 45.Nf7! [D]



45... Rxf7

46.Kxf7 Rxh6 47.Re1 Rh3 48.Rg2 f4 49.gxf4  
Rxd3 50.Kxe6 Rxd4 51.f5 Rf4 52.f6 Kc7 53.f7  
Nd7 54.Ke7 Rf6 55.Rg8 Rf2 56.Rd8? Rxf7+!  
57.Kxf7 [D]



Nb6??

(57...Kxd8 gives Black excellent drawing  
chances) 58.Ke8 (White wins) 1-0

Round 7, February 17, 2012

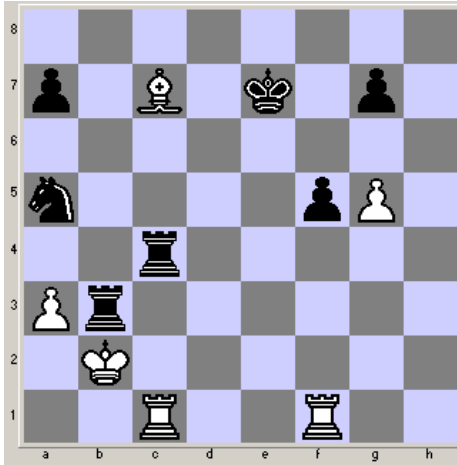
White: Eric Funk (2028)

Black: Don Funk (1600)

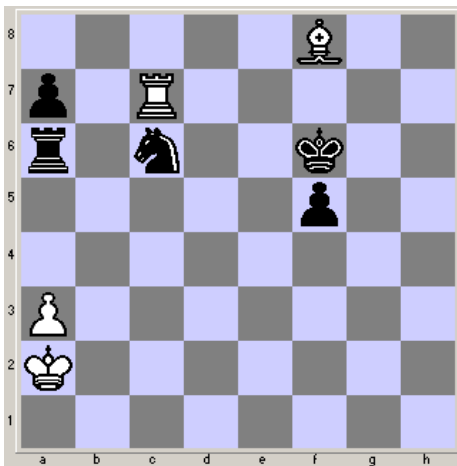
(Submitted by Eric, with his comments.)



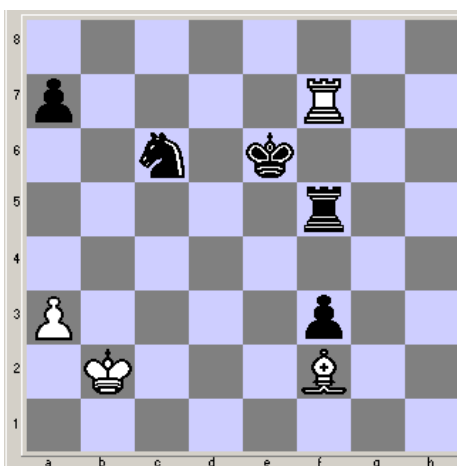
Of the two sides, white has the more vulnerable pawns whereas black has the more active pieces. This becomes especially evident after black's next move. **28... Rdd3** Holding the c-pawn with the passive 29.Nb1 is more trouble than it's worth. I'm being outplayed. **29.c4 Rc3+ 30.Kb2 Bxc4 31.Nxc4 Rxc4 32.Rac1 Na5 33.Bc7 Rb3+ [D]**



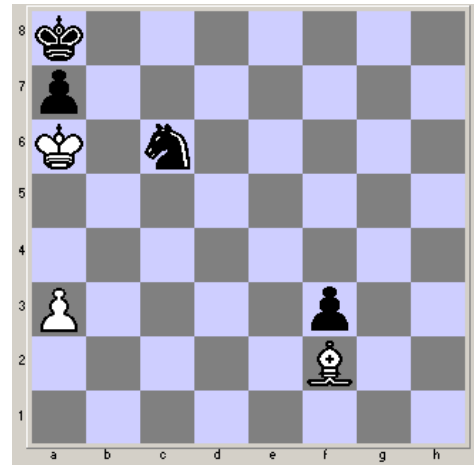
**34.Ka2 Ra4**  
(Threatening mate.) **35.Rfe1+ Kf7 36.Bd6 Rb7 37.Rb1 Rxb1 38.Rxb1 Nc6 39.Rb7+ Kg6 40.Bf8 Kxg5 41.Rxg7+ Kf6 42.Rc7 Ra6 [D]**



The more active 42.... Rc4 seems right. **43.Bc5 Ke6 44.Kb3 Kd5 45.Bg1 f4 46.Rf7 Ke4 47.Bc5 f3 48.Kb2 Ra5 49.Bf2 Rf5[D]**



Trading rooks draws. Either 49.... Rd5 or 49.... Rg5 keeps white on the defensive. **50.Rxf5 Kxf5 51.Kc3 Ke6 52.Kc4 Kd6 53.Kb5 Kc7 54.Ka6 Kb8 55.Be3 Ka8 56.Bf2 [D]**



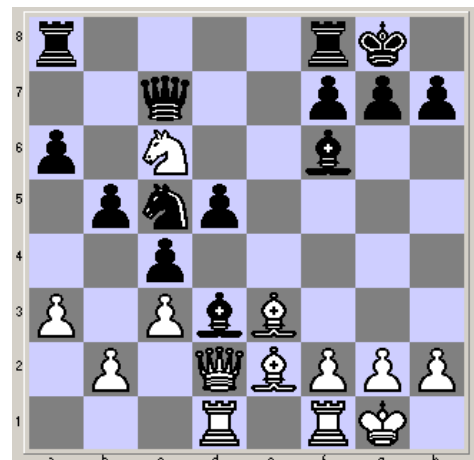
1/2 - 1/2

A lucky escape.

**Round 7, February 24, 2012**  
**White: Allan Messinger (1632)**  
**Black: Will Moyer (1631)**

(Submitted by Will, with comments by Olin and \*Eric.)

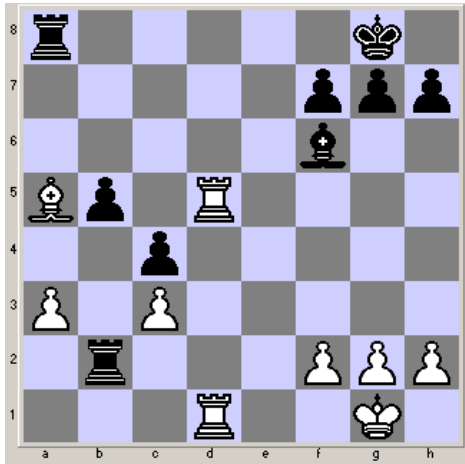
**1.e4 e5 2.Nf3 d6 (Philidor Defense) 3.Nc3 a6**  
(More usual here is c6) **4.d4 exd4 5.Nxd4 Nf6 6.Be2 Be7 7.O-O O-O 8.Bf4 b5 9.a3 Bb7 10.Bd3 c5 11.Nf3 c4 12.Be2 Nxe4 13.Nxe4 Bxe4 14.Qd2 Nd7 15.Rad1 d5 16.c3 Nc5 17.Nd4 Bf6 18.Be3 Bd3 19.Nc6 Qc7**  
(Enter "Complication City"! [D])



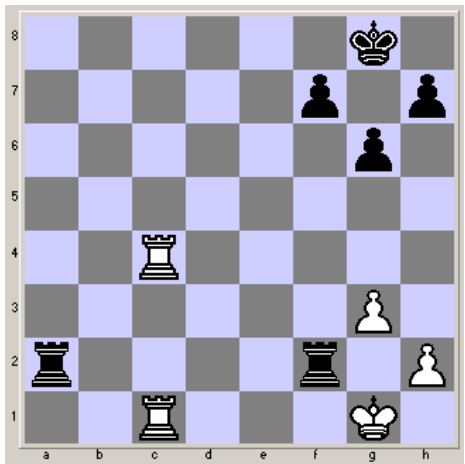
**20.Bxc5**

**Bxe2 21.Qxe2 Rfe8 22.Qd2 Qxc6 23.Qxd5 Qxd5 24.Rxd5 Re2 25.Rfd1 Rxb2 26.Bb4 a5? 27.Bxa5! [D]** (Page 3) (27...Rxa5?? 28.Rd8+! and mate follows.) **27...g6 28.Bb4 Rc2 29.g3 Bxc3 30.Rxb5 Bxb4 31.axb4 Raa2 32.Rf1 Rcb2 33.Rc5 Rxb4 34.Rc1 Rbb2 35.R5xc4 Rxf2 [D]** (Page 3) (Now that the smoke has cleared, \*Black is up a pawn with good winning chances.) **36.Rh4 Rg2+ 37.Kh1 Rgc2?** (\*Trading one pair of rooks is the wrong thing for black to do. The game should now be drawn.) (Continued on page 3)

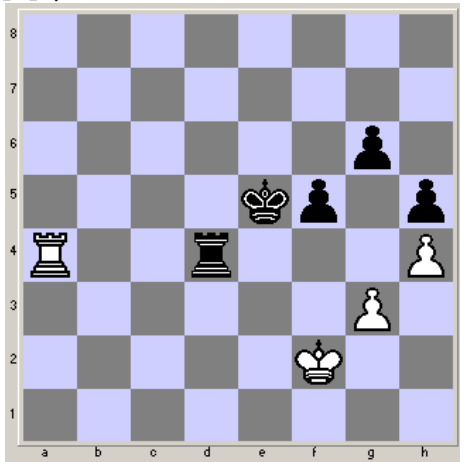
Position after 27.Bxa5! (From page 2)



Position after 35... Rxf2 (From page 2)

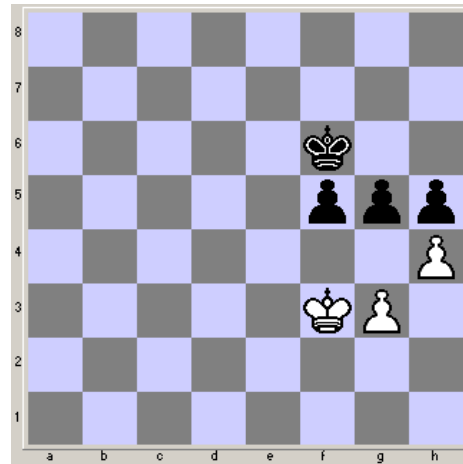


(continued from page 2) **38.Rxc2 Rxc2 39.Rd4 Kg7 40.h3 h5 41.Kg1 Kh6 42.Kh1 f5 43.Kg1 Re2 44.Rc4 Re6 45.Kf2 Kg5 46.Kf3 Rb6 47.Rd4 Rb3+ 48.Kf2 Rb6 49.Kf3 Kf6 50.Rc4 Rb3+ 51.Kf2 Rb6 52.Kf3 Ke5 53.Ra4 Rb3+ 54.Kf2 Rd3 55.h4 Rd4 [D]** (Black would like to trade rooks.)



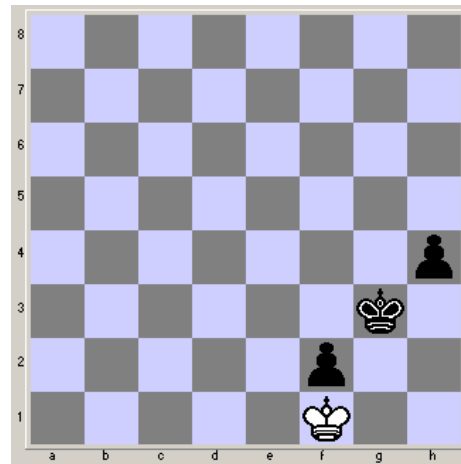
**56.Ra6 Rd6 57.Rxd6** (He now gets the chance; \*however, trading rooks is risky) **Kxd6 58.Kf3 Ke5 59.Ke3 Ke6 60.Kf4 Kf6 61.Kf3 g5 [D]**

Position after 61...g5



(\*62.hg+ Kxg5 63.Ke3 Kg4 64.Kf2 Kh3 65.Kf3 Kh2 66.Kf2! ((not 66.Kf4? Kg2, which loses)) and white holds the draw.) **62.Ke3 gxh4 63.gxh4 Ke5 64.Kf3 f4 65.Kf2 Ke4 66.Ke2 f3+ 67.Kf2 Kf4 68.Kf1 Kg3 69.Kg1 Kxh4 70.Kf1 Kg3 71.Kg1 f2+ 72.Kf1 h4 [D]**

Final position:



**0-1**

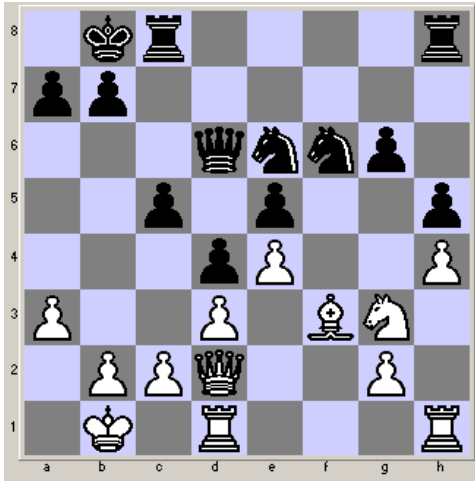
Nice game by Will!

Now for a change of pace, we have a game played by North Penn Chess Club member emeritus, Glenn Snyder! For the past six years Glenn has been residing in Hartland, Maine. Bob Kampia and I have been playing games with Glenn via email. His email is: [poppyeyebright@tds.net](mailto:poppyeyebright@tds.net), just in case you would like to send him a note or challenge him to a game!

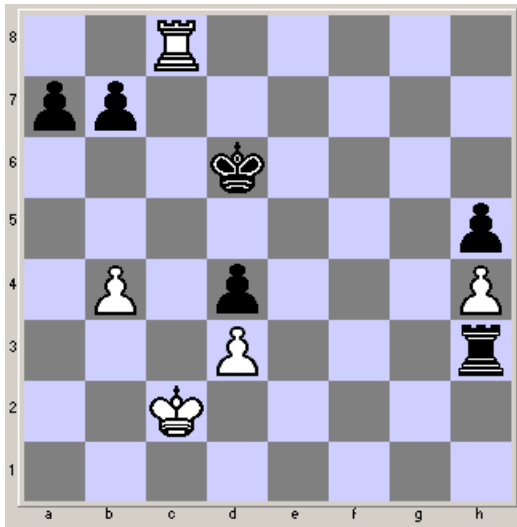
**2nd Houlton Open, Houlton, Maine  
Round 2, March 10, 2012  
White: Glenn Snyder (1600)  
Black: Roger Morin (1995)**

(Submitted by Dan DeLuca, TD, with final comment by Olin.)

1. e4 c5 2. f4 d5 3. Nc3 d4 4. Nce2 Nf6 5. Ng3 Nc6 6. d3 h5 7. h4 g6 8. Be2 Bg4 9. Nf3 Bxf3 10. Bxf3 e5 11. f5 Qd6 12. Bg5 Bh6 13. Bxh6 Rxh6 14. Qd2 Rh8 15. a3 O-O 16. Qg5 Kb8 17. fxc6 fxc6 18. Qd2 Rc8 19. O-O-O Nd8 20. Kb1 Ne6 [D]

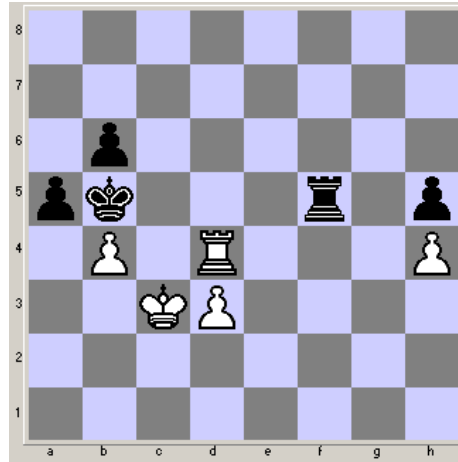


21. c4 dxc3 {e.p.} 22. Qxc3 Ne8 23. Rc1 N8c7 24. Ne2 Nb5 25. Qc4 Nbd4 26. Qd5 Qxd5 27. exd5 Nxe2 28. Bxe2 Nf4 29. Rhe1 Rhd8 30. g3 Nxe2 31. Rxe2 Rxd5 32. Rc3 Rf8 33. Re4 Rf3 34. g4 Kc7 35. gxh5 gxh5 36. Kc2 Kd6 37. b4 cxb4 38. axb4 Rd4 39. Rxd4+ exd4 40. Rc8 Rh3 {R-f4!} [D]

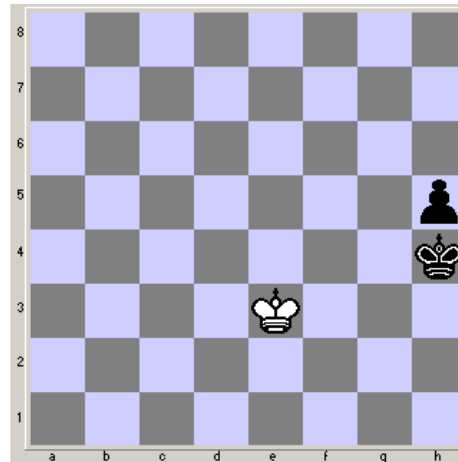


41. Rd8+ Ke5 42. Re8+ Kd5 43. Rd8+ Kc6 44. Rxd4 Rf3 45. Kc3 Rf5 46. Rc4+ Kb5 47. Re4 b6 48. Rd4 a5 [D] 49. bxa5 bxa5 50. Kb3 Rc5 51. Rc4 Rxc4 52. dxc4+ Kc5 53. Ka4 Kxc4 54. Kxa5 Kc3 55. Kb5 Kd4 56. Kb4 Ke4 57. Kc3 Kf4 58. Kd3 Kg4 59. Ke3 Kxh4 [D] 1/2-1/2

Position after 48... a5



Final position:



1/2-1/2

(The black king cannot stop the white king from reaching the h-file.)

Good effort by Glenn!



Glenn Snyder (1600), left, plays tournament winner Roger Morin (1995) to a draw in round two of the 2nd Houlton Open.

## A game from our 2012 November Swiss

Eric wrote:

*"Olin,*

*Jonathan requested that I submit this game for the newsletter. He gave me more trouble than I expected. Nice game, Jonathan."*

**White: Jonathan Rumpf**

**Black: Eric Funk**

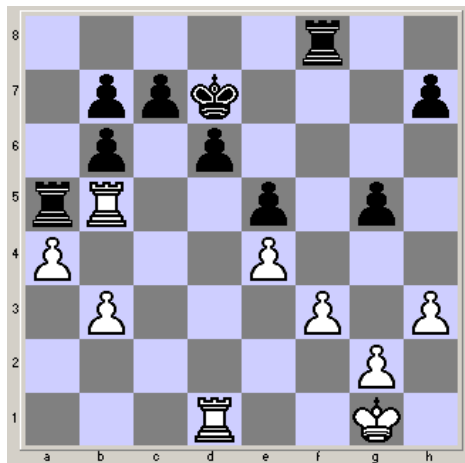
**Event: NPCC November Swiss 2011**

(Submitted by Eric, with his comments.)

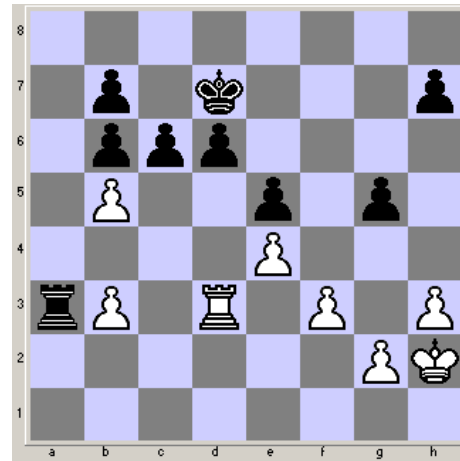
**1.e4 e5 2.Nf3 Nc6 3.Bc4 Nf6 4.d3 Bc5 5.c3 d6 6.Nbd2 Be6 7.Bxe6 fxe6 (White can follow up with Qb3 either on his next move or move 9, in either case resulting in some interesting play.) 8.0-0 0-0 [D]**



**9.d4** (White can regain this pawn, but there's no reason to give it up in the first place. More solid was 9.b4 intending to follow up with 10.Bb2, after Black retreats his bishop). **ed 10.cd Nxd4 11.Nxd4 Bxd4 12.Kh1** (White's first outright mistake. 12.Qb3 had to be played.) **12.... Bb6 13.b3 e5 14.Nc4 Kh8 15.Bg5 Qe8 16.Nxb6 axb6 17.Re1 Qh5 18.Bxf6 Qxd1 19.Rexd1 Rxf6 20.f3 g5 21.h3 Kg7 22.Kg1 Kf7 23.Rd5 Ke7 24.Rb5 Ra5 25.a4 Rf8 26.Rc1 Kd7 27.Rd1 [D]** (This allows black's rook to penetrate. Other moves like 27.Rxa5 would have helped prolong resistance.)



**27.... Rxb5 28.axb5 Ra8 29.Kh2 Ra3 30.Rd3 c6 [D]** (White's king remains a spectator the entire endgame. At some point white had to try Kg3 and Kg4 to whip up some counter play.)



**31.bc+ bc 32.Rc3 d5 33.Re3 d4 34.Rd3 c5 35.Rd2 Rxb3 36.Ra2 d3 37.Ra7+ Kc6 38.Ra8 Rb4 39.Rd8 Rd4 40.Rc8+ Kb7 41.Rh8 d2 42.Rxh7+ Ka6 0 - 1**

That's all the games for this issue. I have more games submitted by some of you but I will have to save them for the Summer newsletter. Thanks to all for submitting games and keep them coming!

### Other places to play chess:

Wednesday evenings 7:30 PM at the Covenant Presbyterian PCA Church located off Sumneytown Pike (Route 63) about a mile west of Harleysville. Turn left if travelling west onto Covenant Lane.

Friendly off hand non-rated games (clocks optional). Bring chess set.

For more info, you may contact Jonathan English at [startreck@gmail.com](mailto:startreck@gmail.com).

Tuesday mornings 9:30 AM at the Pennridge Community Senior Center in Silverdale. Located on route 113 near route 152 across the street from the John Deere dealer.

<http://www.pennridgecenter.org>

Friendly off hand non-rated games (clocks optional). Bring chess set.